

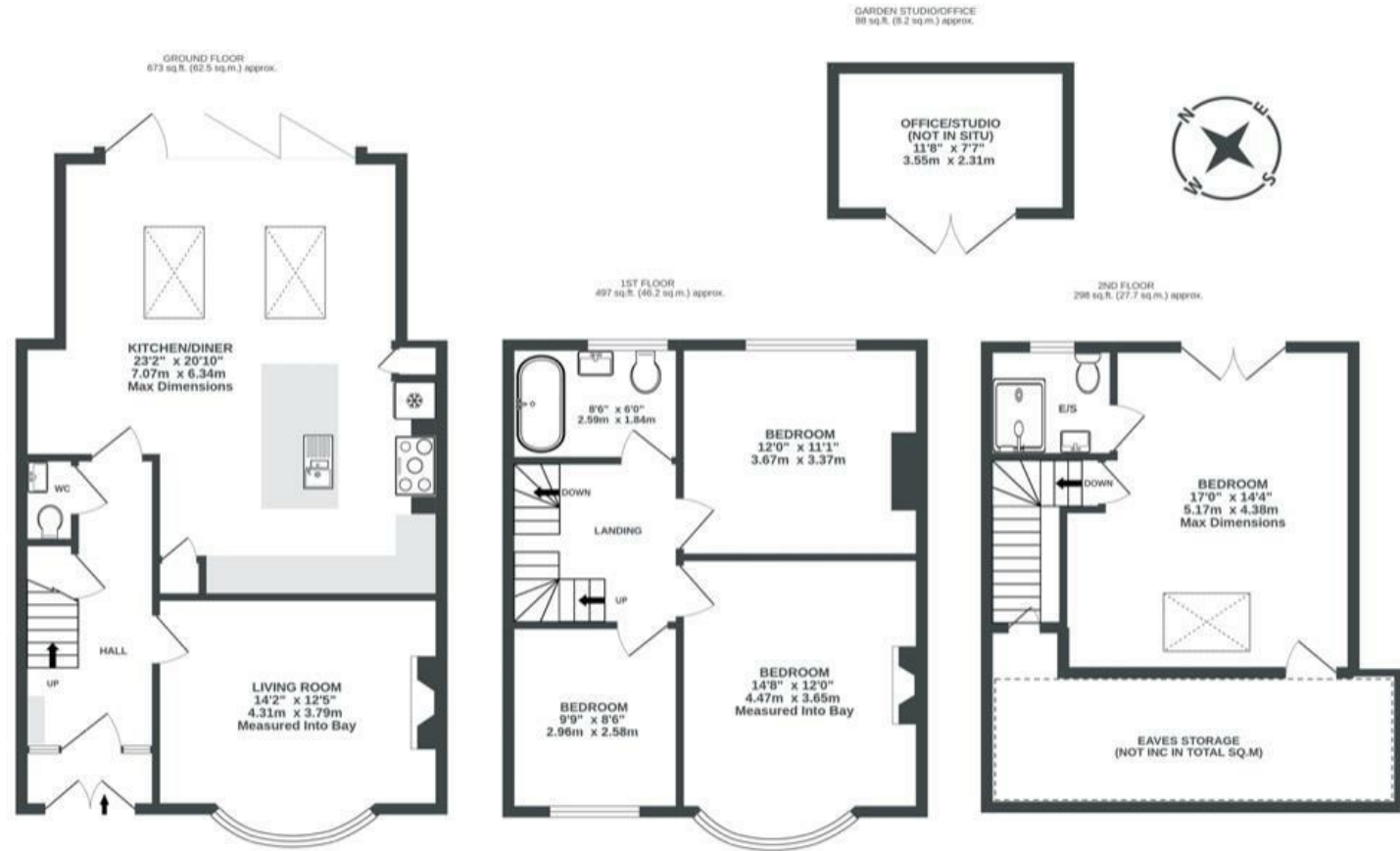
Boardwalk

Bayham Road

KNOWLE

APPROXIMATE FLOOR AREA
144.7 SQM / 1557 SQFT

BOOK A VIEWING
01179 898 222
hello@boardwalkpropertyco.com



Illustrations are for reference purposes only, measurements are approximate, not to scale.

Boardwalk

Bayham Road , BRISTOL



£750,000



4 Bedrooms



Bristol, BS4
2DY



3 Bathrooms

"We have spent the last year renovating and extending this semi-detached property, which had seen little change since being built in 1936. Given the scale of the work, this represented quite a challenge, however, we had a clear vision of creating a modern and light family home, incorporating period features. The biggest change has been the new open-plan kitchen diner with bifold doors to the deck and garden. The new garden room was designed to appeal to those working from home or as a peaceful retreat for yoga lovers."

Having spent so much time working on the property, we have got to know the wonderful neighbours and the area, which has a great selection of shops and places for coffee, alongside open recreational space with Perrett Park so close by. We really love the facilities this part of Knowle provides, and its proximity to the city, and must comment on the house's glorious views, great for watching balloons and fireworks. Having spent so much hard work and investment onto

